

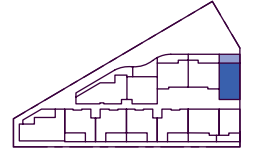
# TREEHOUSE

PARKSIDE WALK JOLIMONT

# Type E

2 Bed x 2 Bath

## Location

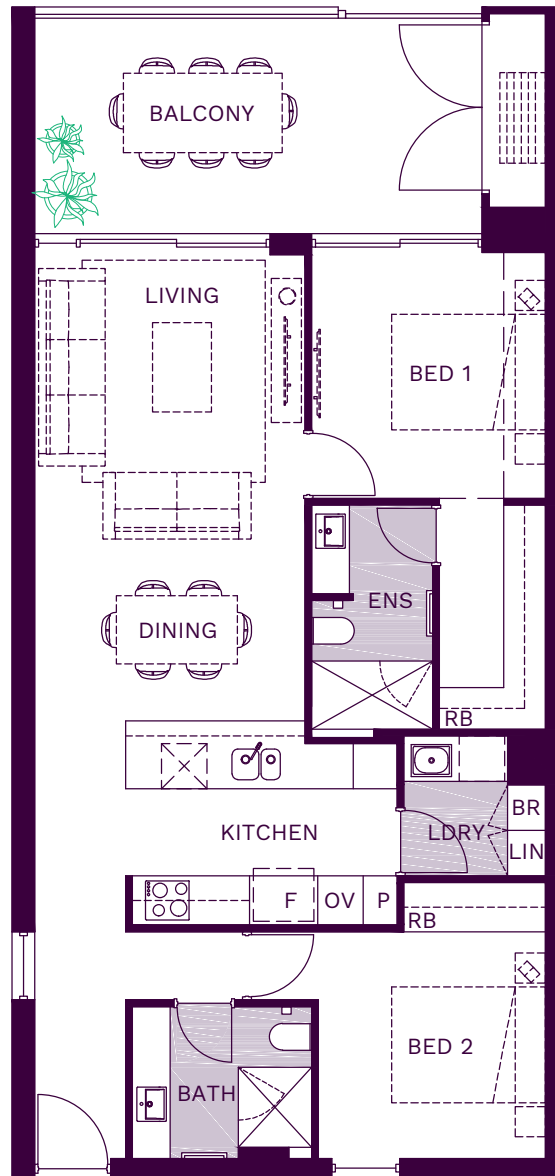


## Scale

0 1 2 3

## Apartments

Shown	28
Similar	37, 46
Level	2, 3, 4



## Details

Beds	2
Baths	2
Car Bays	2T
Storage	4/5m <sup>2</sup>

## Areas (Strata)

Living	79-81m <sup>2</sup>
Balcony	19m <sup>2</sup>
<b>Total Strata</b>	<b>132-134m<sup>2</sup></b>

## Areas (Architectural)

Living	85m <sup>2</sup>
Balcony	21m <sup>2</sup>
<b>Total Living</b>	<b>106m<sup>2</sup></b>

## General Notes

Variations from strata plan may apply. Furniture is indicative only and not provided. Shape and configuration of balconies, doors, windows, condensers and ducts may differ from those illustrated. Areas of apartment given are based both on architectural and strata measurements as defined in the contract for sale. Planters are indicative only. Please refer to the floor plates for location of planters.

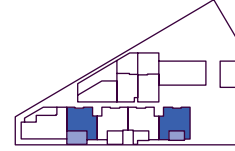
# TREEHOUSE

PARKSIDE WALK JOLIMONT

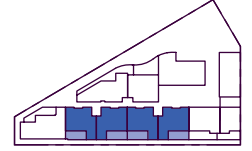
# Type F

2 Bed x 2 Bath

### Location (G)



### Location (1/2)

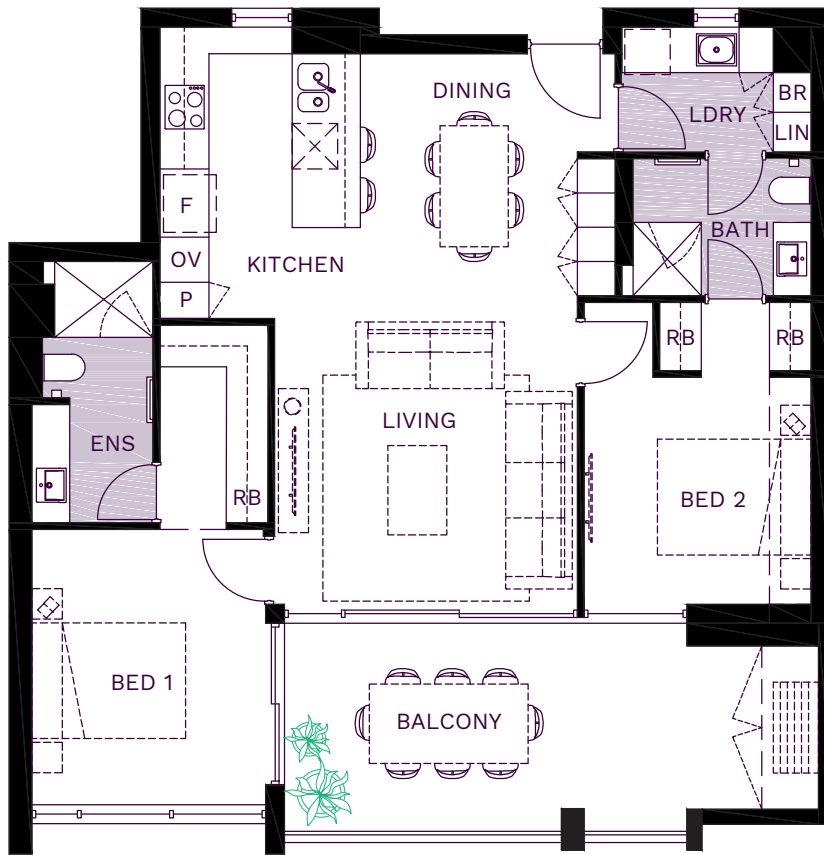


### Scale

0 1 2 3

### Apartments

Shown	1
Similar	10, 12, 19, 21
Mirrored	4, 11, 13 20, 22
Level	G, 1, 2



### Details

Beds	2
Baths	2
Car Bays	2T
Storage	4-8m <sup>2</sup>

### Areas (Strata)

Living	79/80m <sup>2</sup>
Balcony	18-33m <sup>2</sup>
<b>Total Strata</b>	<b>130-147m<sup>2</sup></b>

### Areas (Architectural)

Living	85m <sup>2</sup>
Balcony	20-34m <sup>2</sup>
<b>Total Living</b>	<b>105-119m<sup>2</sup></b>

### General Notes

Variations from strata plan may apply. Furniture is indicative only and not provided. Shape and configuration of balconies, doors, windows, condensers and ducts may differ from those illustrated. Areas of apartment given are based both on architectural and strata measurements as defined in the contract for sale. Planters are indicative only. Please refer to the floor plates for location of planters.

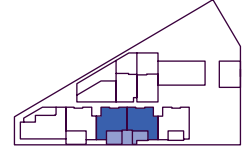
# TREEHOUSE

PARKSIDE WALK JOLIMONT

# Type F1

2 Bed x 2 Bath

## Location

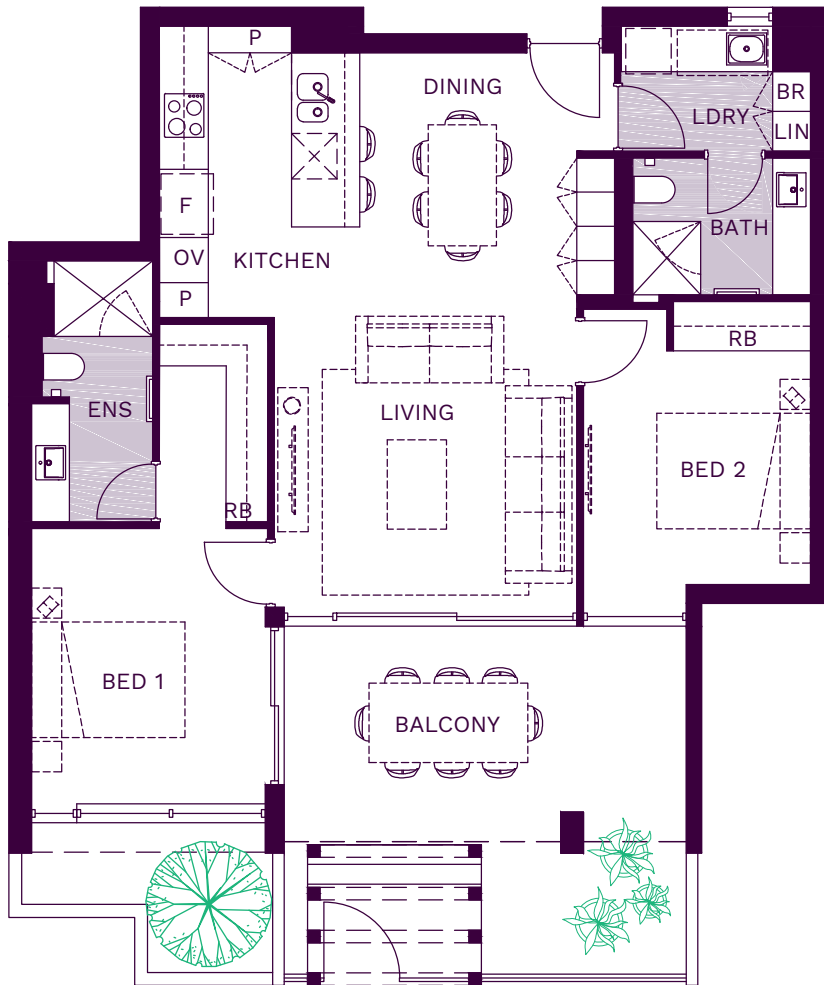


## Scale

0 1 2 3

## Apartments

Shown	3
Mirrored	2
Level	G



## Details

Beds	2
Baths	2
Car Bays	2T
Storage	7/8m <sup>2</sup>

## Areas (Strata)

Living	80m <sup>2</sup>
Balcony	19/25m <sup>2</sup>
<b>Total Strata</b>	<b>135/145m<sup>2</sup></b>

## Areas (Architectural)

Living	85m <sup>2</sup>
Balcony	21/26m <sup>2</sup>
<b>Total Living</b>	<b>106/111m<sup>2</sup></b>

## General Notes

Variations from strata plan may apply. Furniture is indicative only and not provided. Shape and configuration of balconies, doors, windows, condensers and ducts may differ from those illustrated. Areas of apartment given are based both on architectural and strata measurements as defined in the contract for sale. Planters are indicative only. Please refer to the floor plates for location of planters.

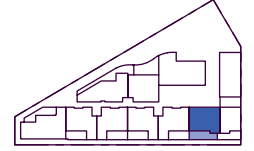
# TREEHOUSE

PARKSIDE WALK JOLIMONT

# Type G1

2 Bed x 2 Bath

## Location

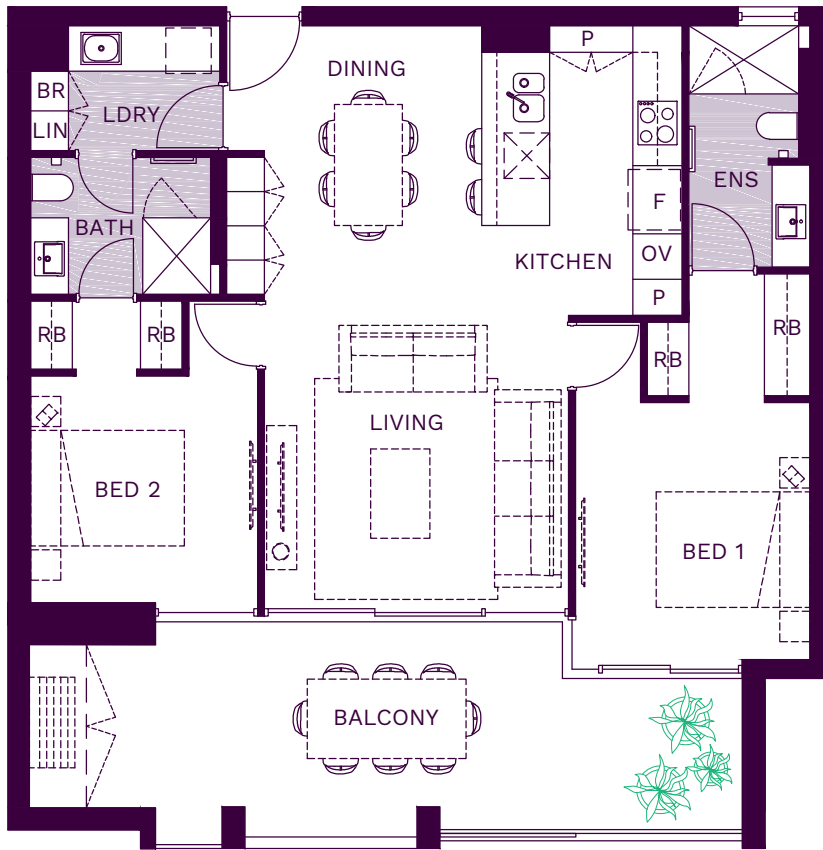


## Scale

0 1 2 3

## Apartments

Shown	9
Similar	18
Level	1, 2



## Details

Beds	2
Baths	2
Car Bays	2T
Storage	5/7m <sup>2</sup>

## Areas (Strata)

Living	80/81m <sup>2</sup>
Balcony	24/25m <sup>2</sup>
<b>Total Strata</b>	<b>139/141m<sup>2</sup></b>

## Areas (Architectural)

Living	85m <sup>2</sup>
Balcony	26m <sup>2</sup>
<b>Total Living</b>	<b>111m<sup>2</sup></b>

## General Notes

Variations from strata plan may apply. Furniture is indicative only and not provided. Shape and configuration of balconies, doors, windows, condensers and ducts may differ from those illustrated. Areas of apartment given are based both on architectural and strata measurements as defined in the contract for sale. Planters are indicative only. Please refer to the floor plates for location of planters.

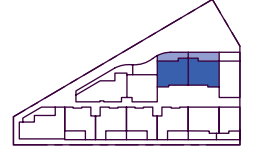
# TREEHOUSE

PARKSIDE WALK JOLIMONT

# Type G2

2 Bed x 2 Bath

## Location



## Scale

0 1 2 3

## Apartments

Shown	26
Similar	35, 44
Mirrored	27, 36, 45
Level	2, 3, 4



## Details

Beds	2
Baths	2
Car Bays	2
Storage	4m <sup>2</sup>

## Areas (Strata)

Living	85/86m <sup>2</sup>
Balcony	26/27m <sup>2</sup>
<b>Total Strata</b>	<b>144-147m<sup>2</sup></b>

## Areas (Architectural)

Living	89m <sup>2</sup>
Balcony	29m <sup>2</sup>
<b>Total Living</b>	<b>118m<sup>2</sup></b>

## General Notes

Variations from strata plan may apply. Furniture is indicative only and not provided. Shape and configuration of balconies, doors, windows, condensers and ducts may differ from those illustrated. Areas of apartment given are based both on architectural and strata measurements as defined in the contract for sale. Planters are indicative only. Please refer to the floor plates for location of planters.

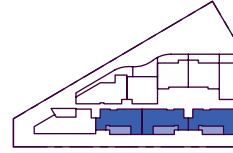
# TREEHOUSE

PARKSIDE WALK JOLIMONT

# Type H

2 Bed x 2 Bath

## Location

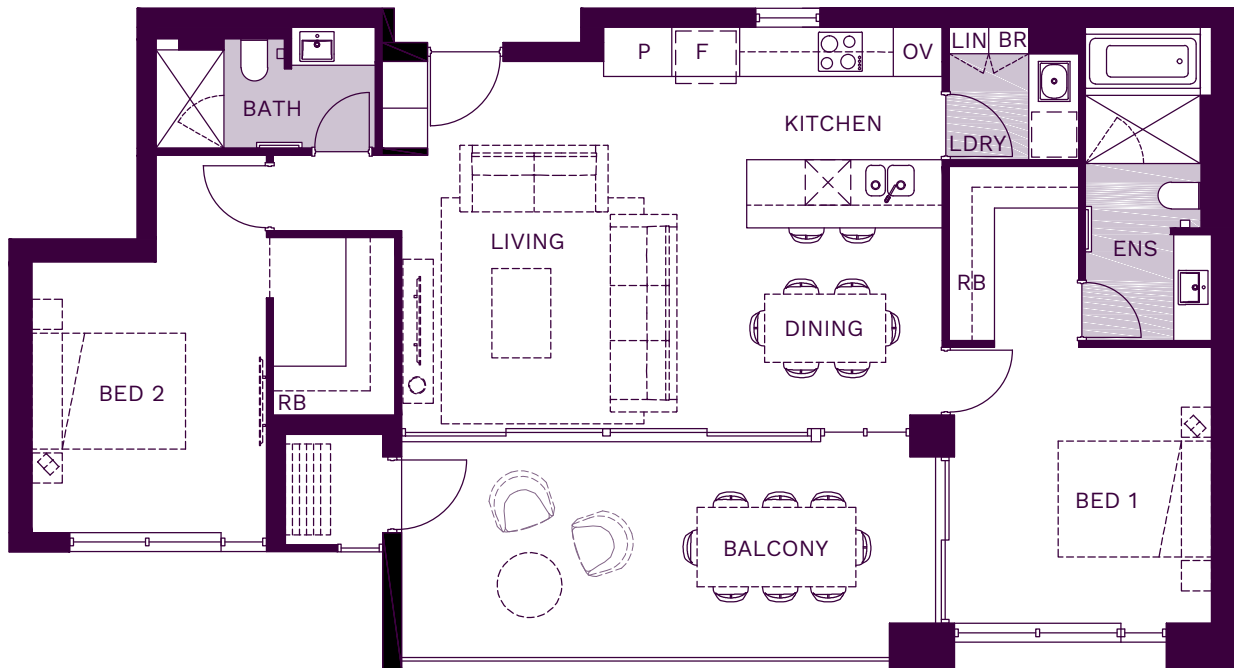


## Scale



## Apartments

Shown	31
Similar	29, 38, 40
Mirrored	30, 39
Level	3, 4



## Details

Beds	2
Baths	2
Car Bays	2
Storage	4m <sup>2</sup>

## Areas (Strata)

Living	88/89m <sup>2</sup>
Balcony	22/23m <sup>2</sup>
<b>Total Strata</b>	<b>143-153m<sup>2</sup></b>

## Areas (Architectural)

Living	94m <sup>2</sup>
Balcony	24m <sup>2</sup>
<b>Total Living</b>	<b>118m<sup>2</sup></b>

## General Notes

Variations from strata plan may apply. Furniture is indicative only and not provided. Shape and configuration of balconies, doors, windows, condensers and ducts may differ from those illustrated. Areas of apartment given are based both on architectural and strata measurements as defined in the contract for sale. Planters are indicative only. Please refer to the floor plates for location of planters.

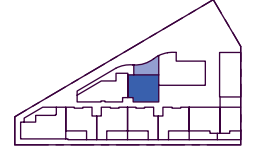
# TREEHOUSE

PARKSIDE WALK JOLIMONT

# Type J

2 Bed x 2 Bath

## Location

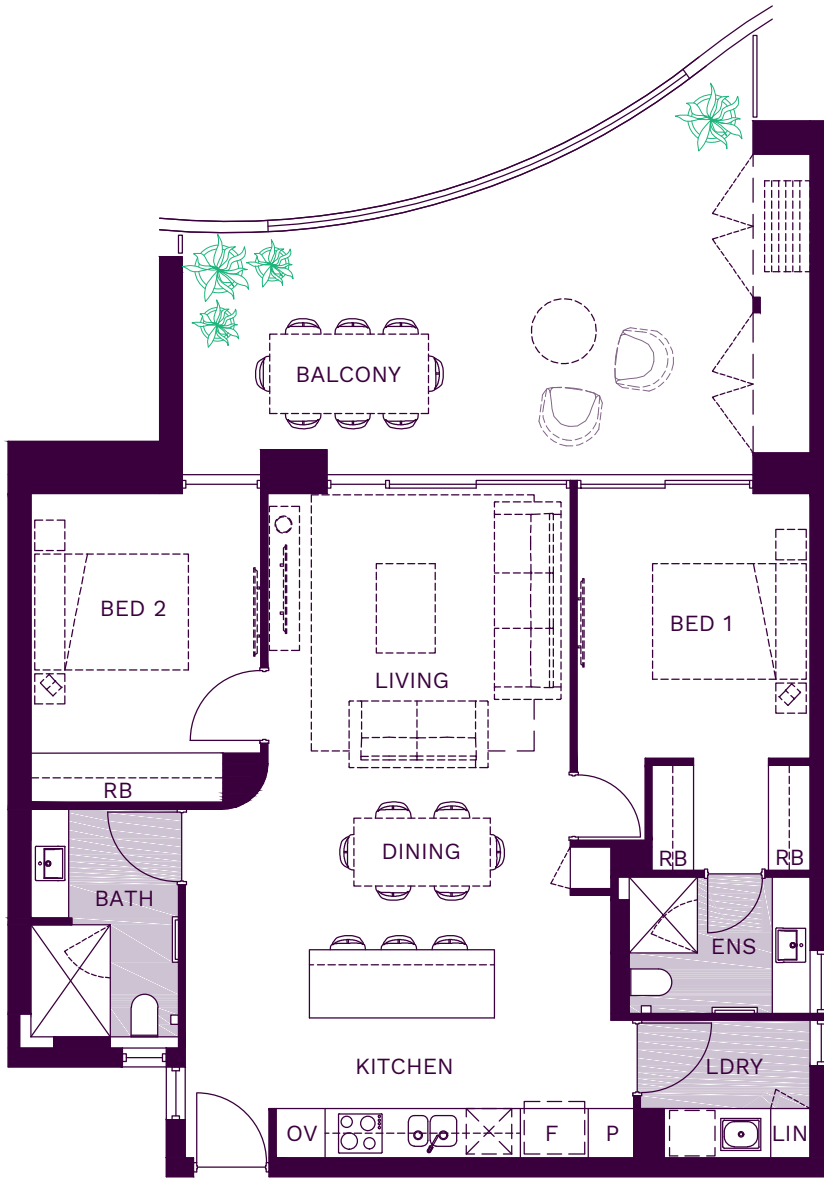


## Scale

0 1 2 3

## Apartments

Shown	16
Similar	25, 34, 43
Level	1, 2, 3, 4



## Details

Beds	2
Baths	2
Car Bays	2
Storage	4m <sup>2</sup>

## Areas (Strata)

Living	87-89m <sup>2</sup>
Balcony	32/33m <sup>2</sup>
<b>Total Strata</b>	<b>151-161m<sup>2</sup></b>

## Areas (Architectural)

Living	92m <sup>2</sup>
Balcony	35m <sup>2</sup>
<b>Total Living</b>	<b>127m<sup>2</sup></b>

## General Notes

Variations from strata plan may apply. Furniture is indicative only and not provided. Shape and configuration of balconies, doors, windows, condensers and ducts may differ from those illustrated. Areas of apartment given are based both on architectural and strata measurements as defined in the contract for sale. Planters are indicative only. Please refer to the floor plates for location of planters.

# TREEHOUSE

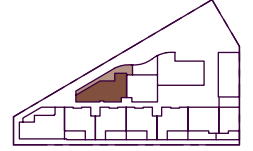
PARKSIDE WALK JOLIMONT

# Type K

2 Bed x 2 Bath + Study



### Location



### Scale



### Apartments

Shown	15
Similar	24, 33, 42
Level	1, 2, 3, 4



### Details

Beds	2
Baths	2
Car Bays	2
Storage	4m <sup>2</sup>

### Areas (Strata)

Living	98/99m <sup>2</sup>
Balcony	39/40m <sup>2</sup>
<b>Total Strata</b>	<b>171-178m<sup>2</sup></b>

### Areas (Architectural)

Living	105m <sup>2</sup>
Balcony	42m <sup>2</sup>
<b>Total Living</b>	<b>147m<sup>2</sup></b>

### General Notes

Variations from strata plan may apply. Furniture is indicative only and not provided. Shape and configuration of balconies, doors, windows, condensers and ducts may differ from those illustrated. Areas of apartment given are based both on architectural and strata measurements as defined in the contract for sale. Planters are indicative only. Please refer to the floor plates for location of planters.



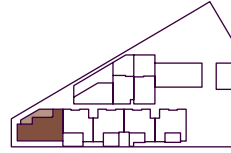
# TREEHOUSE

PARKSIDE WALK JOLIMONT

# Type L

2 Bed x 2 Bath + Study

### Location

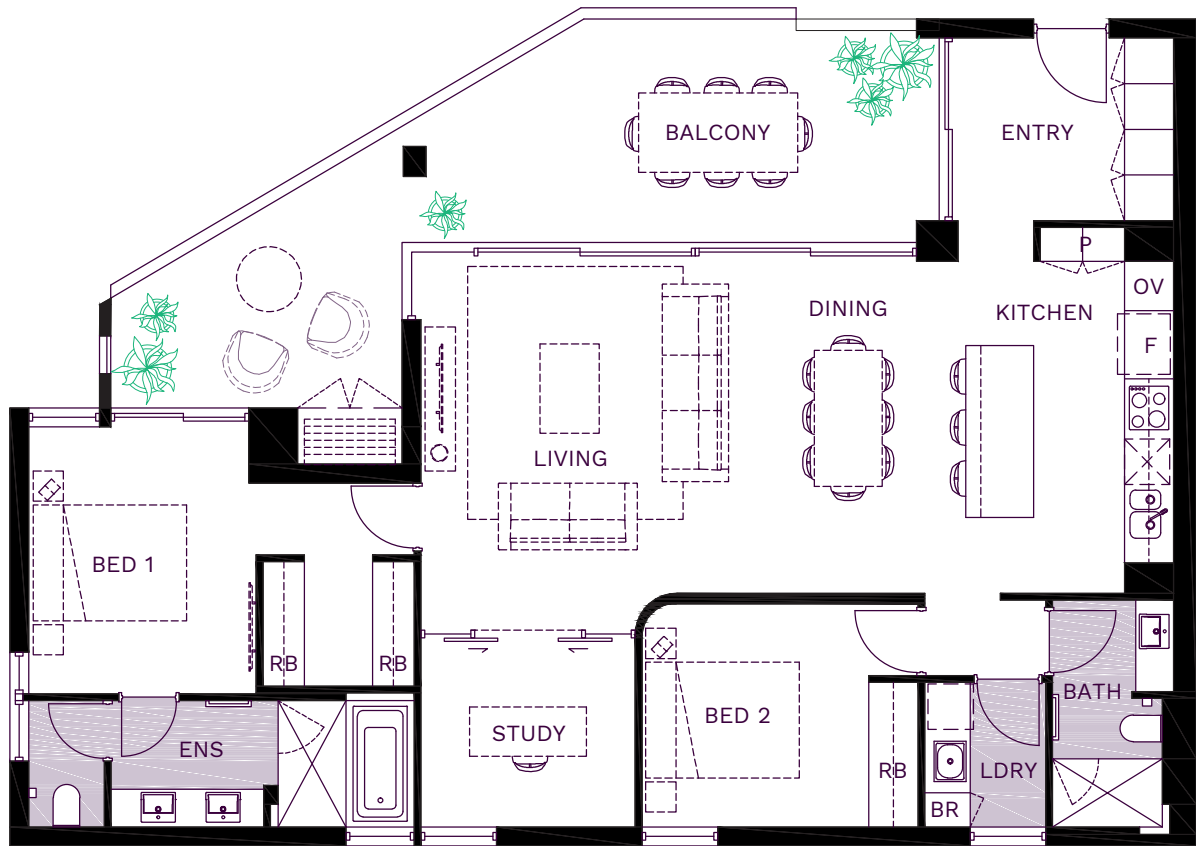


### Scale



### Apartments

Shown	14
Similar	5, 23
Level	G, 1, 2



### Details

Beds	2
Baths	2
Car Bays	2
Storage	4m <sup>2</sup>

### Areas (Strata)

Living	108m <sup>2</sup>
Balcony	29-62m <sup>2</sup>
<b>Total Strata</b>	<b>172-203m<sup>2</sup></b>

### Areas (Architectural)

Living	115m <sup>2</sup>
Balcony	30/67m <sup>2</sup>
<b>Total Living</b>	<b>145/182m<sup>2</sup></b>

### General Notes

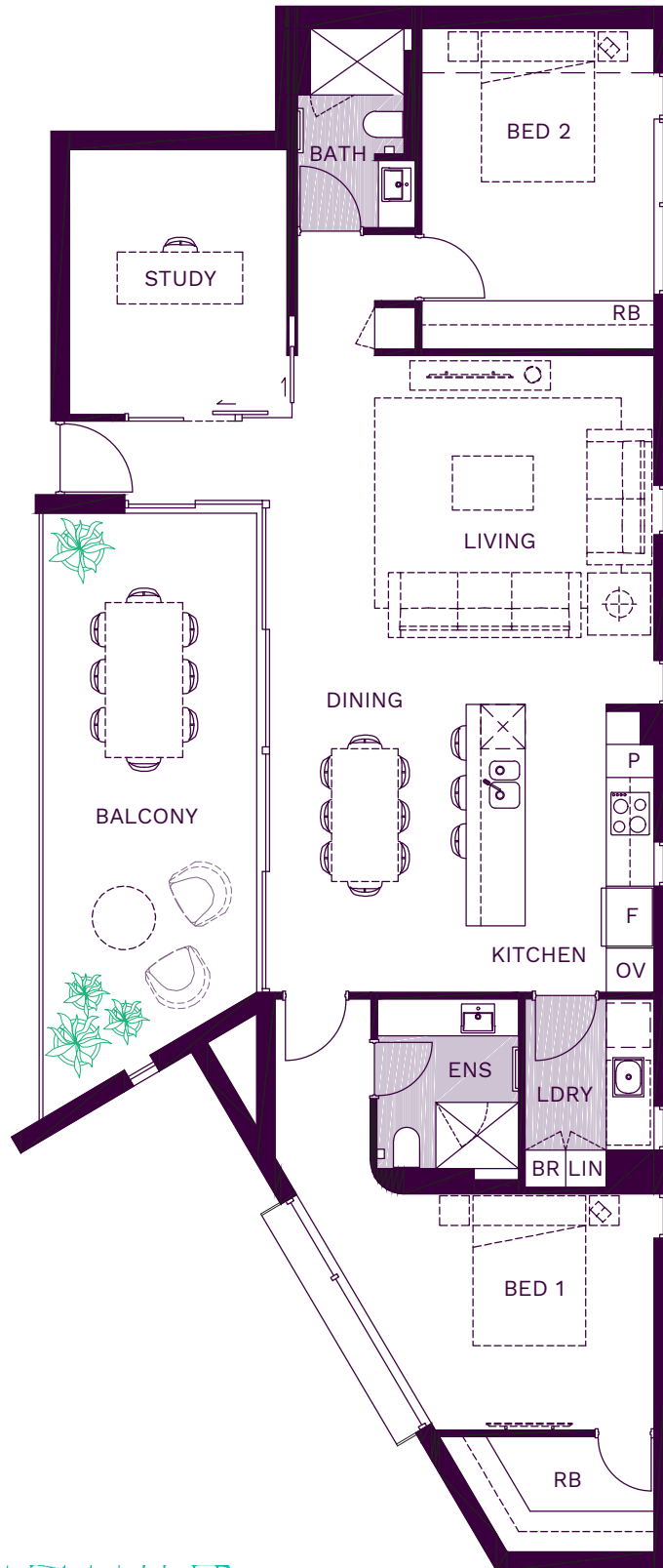
Variations from strata plan may apply. Furniture is indicative only and not provided. Shape and configuration of balconies, doors, windows, condensers and ducts may differ from those illustrated. Areas of apartment given are based both on architectural and strata measurements as defined in the contract for sale. Planters are indicative only. Please refer to the floor plates for location of planters.

# TREEHOUSE

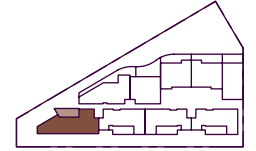
PARKSIDE WALK JOLIMONT

# Type M

2 Bed x 2 Bath + Study



## Location



## Scale



## Apartments

Shown	41
Similar	32
Level	3, 4



## Details

Beds	2
Baths	2
Car Bays	2
Storage	4m <sup>2</sup>

## Areas (Strata)

Living	108m <sup>2</sup>
Balcony	20/37m <sup>2</sup>
<b>Total Strata</b>	<b>173/178m<sup>2</sup></b>

## Areas (Architectural)

Living	117m <sup>2</sup>
Balcony	23/39m <sup>2</sup>
<b>Total Living</b>	<b>140/156m<sup>2</sup></b>

## General Notes

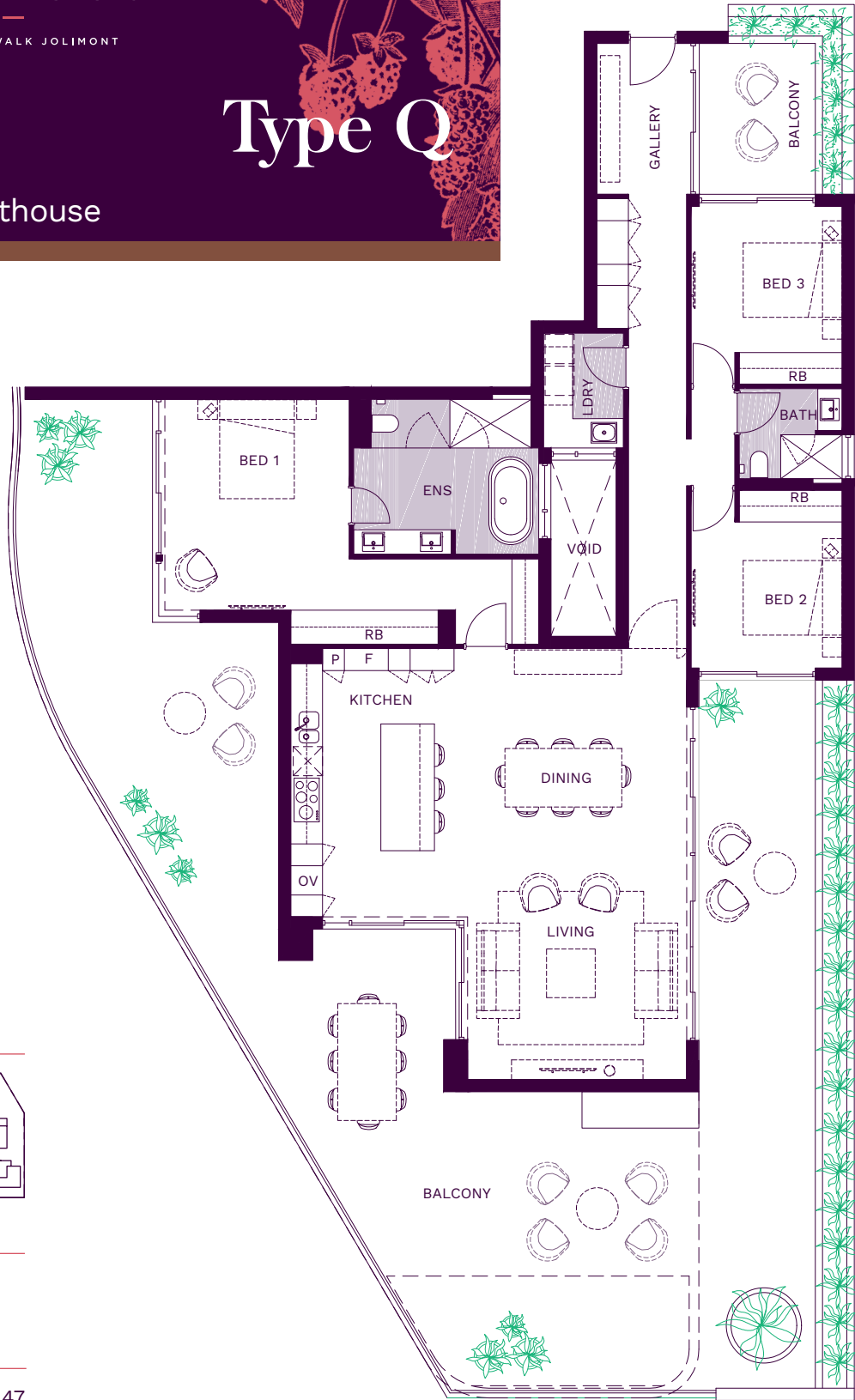
Variations from strata plan may apply. Furniture is indicative only and not provided. Shape and configuration of balconies, doors, windows, condensers and ducts may differ from those illustrated. Areas of apartment given are based both on architectural and strata measurements as defined in the contract for sale. Planters are indicative only. Please refer to the floor plates for location of planters.

# TREEHOUSE

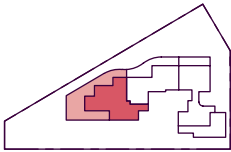
PARKSIDE WALK JOLIMONT

## Type Q

Penthouse



### Location



### Scale



### Apartments

Shown	47
Level	5



### Details

Beds	3
Baths	2
Car Bays	2
Storage	9m <sup>2</sup>

### Areas (Strata)

Living	159m <sup>2</sup>
Balcony	150m <sup>2</sup>
<b>Total Strata</b>	<b>357m<sup>2</sup></b>

### Areas (Architectural)

Living	161m <sup>2</sup>
Balcony	157m <sup>2</sup>
<b>Total Living</b>	<b>318m<sup>2</sup></b>

### General Notes

Variations from strata plan may apply. Furniture is indicative only and not provided. Shape and configuration of balconies, doors, windows, condensers and ducts may differ from those illustrated. Areas of apartment given are based both on architectural and strata measurements as defined in the contract for sale. Planters are indicative only. Please refer to the floor plates for location of planters.